



www.schosa.org

www.hosa.org

SC Health Science
Educators/HOSA Advisors
Facebook Group

SC HOSA
Advisor Meeting at
FLC

Hanna Beckman
Stacie Elwood
Nic Hanle
Jeremy Searson
Anna Snipes

PARTNERS
DIAMOND



ARMY ROTC



Spartanburg Regional
Healthcare System

IC HOSPITAL ASSOCIATION

A Better State of Health

Who To Contact:

- For invoices, conference registration, or monetary questions:
Amanda Wilson at schosa@outlook.com
- For membership, all general HOSA, or event questions:
Angel Clark at aclark@ed.sc.gov or stateadvisor@schosa.org
- For specific competitive event questions:
Angel Clark or **Stacie Elwood** at competitiveevents@schosa.org
- All email addresses for the **Executive Committee** can be found here:
[Board of Directors SC HOSA](#)

Leadership Development

Preparing Future Health Professionals

Community Service

NMDP

Shriners Children's Hospital

Competition

SLC and ILC

90+ Competitive Events

10+ Recognition Events

National Geographic Tests (\$10/test)

Scholarships

SCHOSA: \$16,500

HOSA: Over \$3.2 Million

Pillars of HOSA: Future Health Professionals

2024-2025 HOSA Theme

HOSA-FUTURE HEALTH PROFESSIONALS



What does
HOSA stand
for?

The logo for HOSA (Health Occupations Students of America) features the word "hosa" in a blue, lowercase, sans-serif font. A light brown triangle is positioned inside the letter 'o'. Two red curved lines, one above and one below, sweep across the letters. To the right of "hosa", the words "future", "health", and "professionals" are stacked vertically in a smaller, dark red, lowercase, sans-serif font.

hosa future
health
professionals

SLC Specifics

Hanna Beckman – SC HOSA Chair
Anna Snipes – SC HOSA Secretary

HOSA *Conferences*

State Leadership Conference

- Charleston Area Convention Center
- March 5th – 7th, 2025

International Leadership Conference

- Gaylord Opryland Convention Center,
Nashville, TN
- June 18th – 21st, 2025



Competition

State Leadership
Conference

International
Leadership
Conference

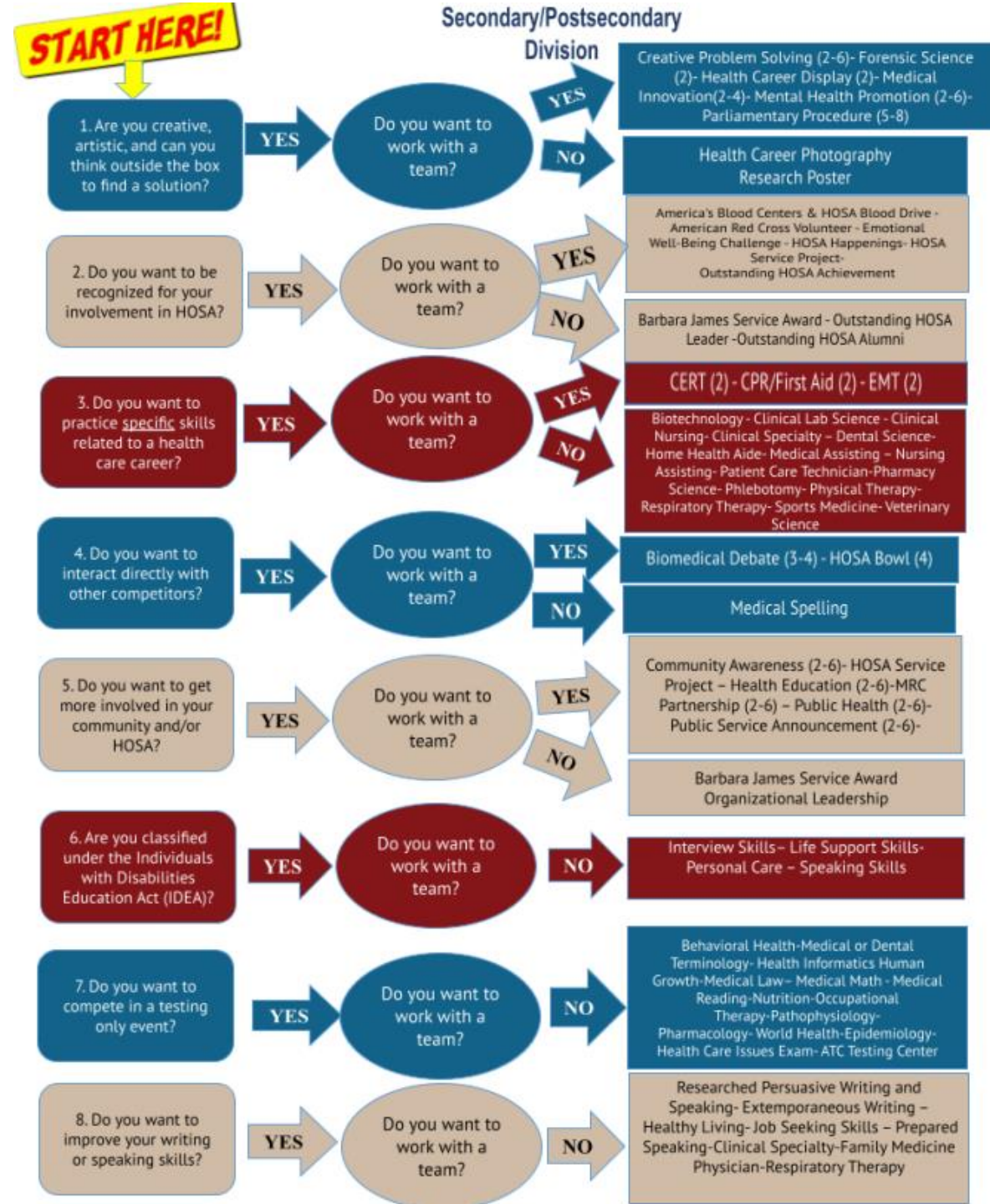
National
Geographic
Learning
Center Tests

Recognition
Events

Competitive
Events

<https://hosa.org/guidelines/>

Helping Students Choose An Event



<https://hosa.org/wp-content/uploads/2024/09/24-25-Whats-Right-for-You-SS.PSCSept05.docx.pdf>

Helping Students Choose An Event

- Click Competition
- Competitive Event Useful Tools
- Event Samples

<https://hosa.org/competitive-event-sample/>

hosa.org/competitive-event-sample/

LOGIN SHOP HOSA DONATE TRANSLATE

hosa future health professionals

SEARCH HOSA

COMPETITIVE EVENT SAMPLES

****PLEASE NOTE: THESE SAMPLES REFLECT PROJECTS FROM PREVIOUS YEAR'S GUIDELINES IN NO PARTICULAR ORDER; BE SURE YOU ARE CHECKING THE CURRENT GUIDELINES FOR EXACT REQUIREMENTS, AS SAMPLES POSTED HERE MAY DIFFER FROM CURRENT REQUIREMENTS.**

Sample Skill Event Scenarios:

- Biomedical Laboratory Science
- CERT Skills
- Clinical Nursing
- CPR / First Aid
- EMT
- Dental Science
- Emergency Medical Technician
- Home Health Aide
- Life Support Skills
- Life Threatening Situations
- Medical Assisting
- Nursing Assisting
- Personal Care
- Pharmacy Science
- Physical Therapy
- Sports Medicine
- Veterinary Science

Clinical Specialty

Competition Categories

Health
Science
(13)

Health
Professions
(14)

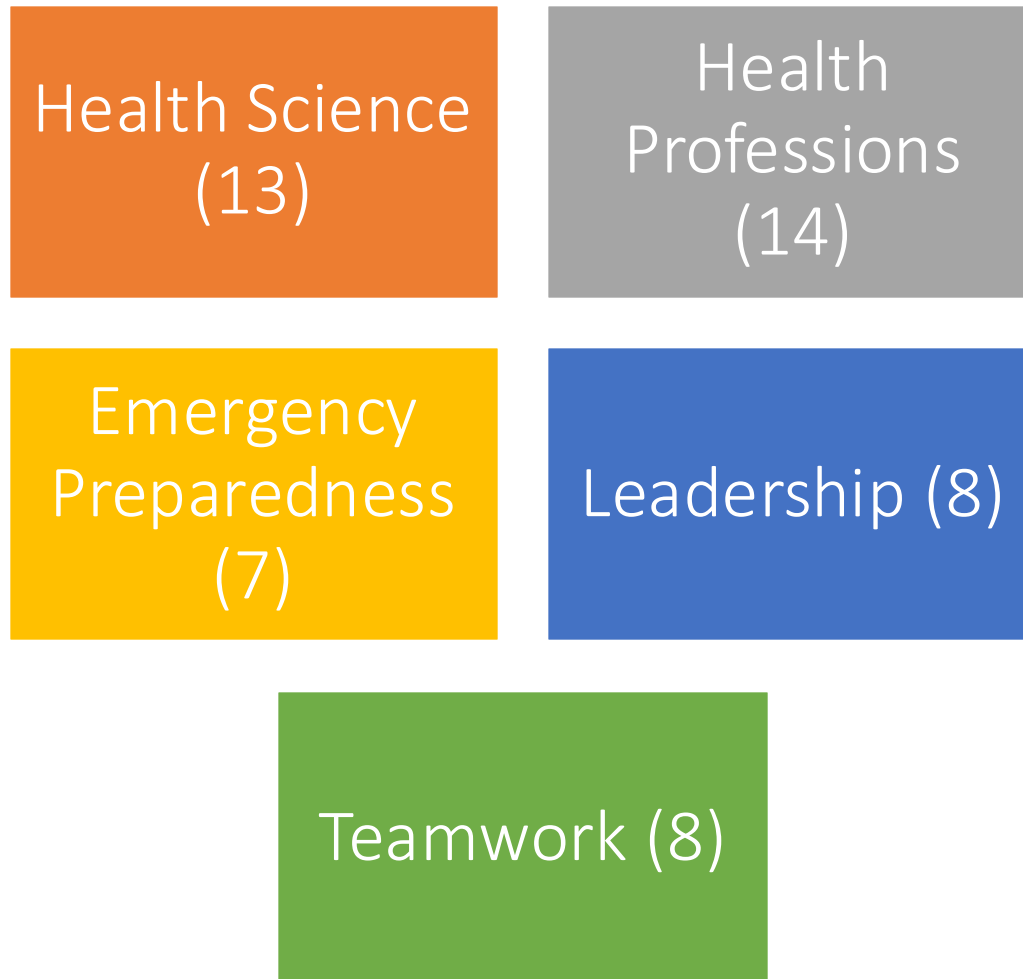
Emergency
Preparedness
(7)

Leadership
(8)

Teamwork
(8)

**Students may compete
in ONLY 1 Competitive Event**

How many students/teams can I register in each competitive event?



3

for ALL events

Health Science Events

Behavioral
Health

Dental
Terminology

ADEA

Health
Informatics

AHIMA

Human Growth
& Development

Medical Law &
Ethics

Medical Math

Medical
Reading

Medical
Spelling

Medical
Terminology

G-W
PUBLISHER

Nutrition

Pathophysiology

iCEV

Pharmacology

World Health &
Disparities

Test + Live Spell Down

<https://hosa.org/guidelines/>

Health Professions Events

Biotechnology
BIO-RAD

Clinical Laboratory Science
~~Charles R. ...~~

Clinical Nursing

College Students Only


Clinical Specialty


Psychiatric Science
~~~~

Family Medicine Physician
~~~~

Home Health Aide

Medical Assisting


Nursing Assisting


Occupational Therapy
NEW
 **TEST ONLY**

Patient Care Technician
~~~~

Personal Care*
IDEA qualified event

Pharmacy Science


Phlebotomy
NEW


Physical Therapy


NEW Respiratory Therapy

Presentation & Skill

Sports Medicine


Veterinary Science


Emergency Preparedness Events

CERT Skills

CPR/First Aid



Emergency Medical Technician



Epidemiology

TEST ONLY

Life Support Skills*

IDEA qualified event

Mental Health Promotion



Public Health



Digital Upload Round 1

Leadership Events

Extemporaneous
Writing - Health
Policy
Online Event
Week prior to SLC

Health Career
Photography

Healthy Living



Interviewing
Skills*

IDEA qualified event
> CareerSafe™

Job Seeking
Skills

> CareerSafe™

~~Organizational
Leadership~~

Prepared
Speaking

Researched
Persuasive
Writing &
Speaking

~~Research
Poster~~

Speaking Skills*

IDEA qualified event

Teamwork Events

Biomedical
Debate



Creative
Problem
Solving

Forensic
Science

Anatontage

Up to 3 teams / chapter

Health Career
Display

Digital Upload Round 1

Health
Education



HOSA Bowl

Medical
Innovation

Parliamentary
Procedure



Public Service
Announcement

HFC

Competition

State Leadership
Conference

International
Leadership
Conference

National
Geographic
Learning
Center Tests

Recognition
Events

Competitive
Events

**Taken the week
prior to SLC**

<https://hosa.org/guidelines/>

Allied Health Statistics

Anatomy & Physiology

Biochemistry

Biology

Career Development

Environmental Health

General Chemistry

Human Heredity

Math For Health Professionals

Microbiology

Organic Chemistry

Physics College

Provided by Health Career Sponsors

*Not recognized on stage at SLC, only

AAFP Family Medicine Career Test



ILC*

Leadership



Occupational Safety & Health



National Geographic Academic Testing

\$10 / test / student

GUIDELINES ARE YOUR LIFE LINE

<https://hosa.org/guidelines/>



SEARCH HOSA



About ▾

MyHOSA ▾

Partners ▾

Competition ▾

Conferences ▾

Resources ▾

2024-2025 COMPETITIVE EVENT GUIDELINES

[Middle School Events](#) | [Health Science Events](#) | [Health Professions Events](#) | [Emergency Preparedness Events](#)

[Leadership Events](#) | [Teamwork Events](#) | [Recognition Events](#) | [NGL Cengage Academic Testing Center](#)

These guidelines are written for ILC. States may have different event processes and deadlines, including upload deadlines! Be sure you check with your local/state advisors (or state websites) to determine what content is required to be uploaded to the HOSA Digital Upload System for all regional and state conferences, and for all processes that may be unique to your state.

August 30, 2024: The 2024 – 2025 Competitive Event Guidelines have been posted.

What do students have to wear at the conference?

And what about advisors?



Wednesday

- Option 1:
 - Official HOSA Uniform
- Option 2:
 - Navy Blue/Black suit
 - Slacks/Knee Length skirt
 - White, closed-neck shirt or white blouse
 - Closed-toe blue or black shoes
 - Blue or black belt
 - Males wear maroon or navy long tie

Thursday

- Competition (See guidelines)
 - Scrubs
 - Khaki-style pants with polo-style top
 - Business Attire
 - Closed-toe shoes
- Symposium
 - Business Attire

Friday

- Khaki or Dark Colored Slacks
 - No shorts or capris
- Closed-toe shoes
 - Tennis shoes allowed
- Conference T-Shirt



Free Time Dress Code

- Jeans, T-shirts & Tennis shoes or "Upon Arrival" dress is acceptable
- No Free Time Dress in the convention center

What Not To Wear

- No short shorts
- No skirts or jeans with holes above the knees
- All leggings must be worn with a shirt long enough to cover mid-thigh
- No low-cut shirts, spaghetti strapped shirts, halter tops, midriff shirts, or t-shirts with inappropriate sayings
- No pajamas outside of your assigned sleeping room
- No uncovered swimwear outside of pool area

General Rules In Place for 2025 SLC

- Advisor Responsibilities Acknowledgement Form
- Curfew 10:00 PM at ALL hotels
- No students should be left alone in the hotel without an adult chaperone
- No students or advisors are allowed to "loungue" around or "camp out" at Conference Center at any time. Symposia, Competition, Exhibitors, Courtesy Corps, etc.
- No students allowed to be out after dark without an adult chaperone or advisors
- Advisors are expected to be with their students in the evening hours.
- Students should not walk outside the Conference Center – rule of thumb is to travel in groups of three
- Advisors and students should have a system in place to know where each other will always be and how to make contact.
- Abide by your district/school rules for chaperoning and safety on field trips

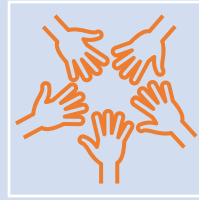
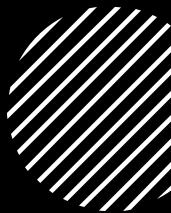
Recognition, Scholarships, HATS

Stacie Elwood – SC HOSA Assistant State Director

Jeremy Searson – SC HOSA Past Chair

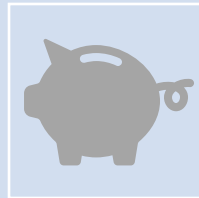


Where / How to Pay

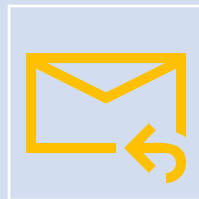


Membership Dues
go to National
HOSA

Balance not
always
accurate



Conference Registration \$\$\$
goes to SC HOSA



If you need an invoice for
either contact Amanda Wilson:
schosa@outlook.com

Competition

State Leadership
Conference

International
Leadership
Conference

National
Geographic
Learning
Center Tests

Recognition
Events

Competitive
Events

<https://hosa.org/guidelines/>

Recognition Events



**Unlimited and ALL
members
are encouraged to
participate**

Chapter Recognition Events

America's Blood
Centers & HOSA
Blood Drive

HOSA Service
Project

Emotional Well
Being Challenge
(ILC Only)

Shriners Children's
Hospital (SC HOSA
Service Project)

- [Shriners Children - SC
HOSA](#)

Individual Recognition Events

Barbara James
Service Award

NEW

Health Literacy
Ambassador

To be recognized for Barbara James & HOSA Service Project, it is a 2 Step Process!

STEP 1 Student responsibility

Welcome to HOSA Apps

If you are Proctoring a Test or Taking a Test, please continue to [HOSA's Online Testing System](#).

All other users may sign in below to access HOSA's Membership and Conference Management Services.

HOSA Apps Login

Login: 19142

Password: [masked] [Forgot Password?](#)

[Judges](#) [Alumni Registration](#) [Member Activity Tracking](#) [Online Testing](#) [Login](#)

STEP 2 Advisor responsibility

Welcome to HOSA Apps

If you are Proctoring a Test or Taking a Test, please continue to [HOSA's Online Testing System](#).

All other users may sign in below to access HOSA's Membership and Conference Management Services.

HOSA Apps Login

Login: 19142

Password: [masked] [Forgot Password?](#)

[Judges](#) [Alumni Registration](#) [Member Activity Tracking](#) [Online Testing](#) [Login](#)

Membership - Invoices - Help

SC, 19142-Ashley Ridge High School Logout (19142)

Member Activities

Advisor: 4, Secondary: 74, Total: 78, Balance: \$1,560.00

Member Activities Table:

Name	Email	Activity Code	Status					
Student			Search					
Chapter	Name	Date	Activity Code	Hours	Dollars (\$)	History	Status	Action
Barbara James Service Award								
Total	Ashley Ridge High School (19142)	Isabella Grossman	10/21/2021	BJ	0.75	Created 2021-10-26	Pending	Action

Worked blood drive sign up table during ILT

BJ Hours: 0.75

Recognition Events

**These 2 events are registered
through normal conference
registration**

Healthcare
Issues Exam

Maximum 5 Students per Chapter

HOSA
Happenings

Each Chapter May Submit 1 Entry

Chapter Advisors



This video will take you step by step on registering students for SLC with competitive event specifics and digital upload details

Registering for a Conference

State
Officer
Application
&
Scholarship
Info

- 2024-2025 Updates for Applications will be posted by November 15th

Scholarships:

<https://www.schosa.org/students/scholarships/>

State Officer Applications:

<https://www.schosa.org/students/state-officer-information/>

DEADLINE is February 1st

Important Dates & Volunteer Sign Up

Nic Hanle – SC HOSA Chair Elect



Important SLC dates: Mark your Calendar!

**Registration
OPENS
November 15th**

<https://apps.hosa.org/>

All updated SLC info @
<https://www.schosa.org/conferences/state-leadership-conference/>

November 20th

**SC HOSA SLC
Webinar 4PM**

**ALL Things
SC HOSA SLC**

January 6th

**Be Ready!
Hotels fill up
within minutes**

January 22nd

**SC HOSA SLC
Webinar 4PM**

**Reminders,
Updates, &
Questions**

<https://www.schosa.org/state-conference-information-guide/>

Registering For SLC

hosa future health professionals
SOUTH CAROLINA

EVERYTHING YOU NEED TO KNOW...

KNOW THE FACTS

STATE LEADERSHIP CONFERENCE

- 1 State Conference Info**
 - Registration Fees
 - Who should attend
 - Who can compete
 - Competitive Events
 - Recognition Events
 - GUIDELINES
 - DressCode
 - On-Line Testing
 - IDs
- 2 Step-by-step Registration Process**
 - PowerPoint with visuals of the registration process & other IMPORTANT info.
- 3 Other Conference Information**
 - General Session
 - Awards Ceremony
 - Scholarships
 - State Officers
 - Special Requirements
 - Reminders
- 4 Forms Photos Options**
 - Required forms & turn in process
 - Outstanding HOSA Member Photo
 - HOSA Chapter Photo
 - Courtesy Corp
 - Voting Delegates
- 5 DIGITAL UPLOAD Information**
 - Events requiring digital uploads
 - Uploading directions
 - Uploading deadlines
- 6 Conference HOTELS**
 - Description
 - Pricing & amenities
 - Conference Verification Form (Form you MUST complete to secure your hotel rooms)
- 7 DEADLINES AND REMINDERS**
 - Make sure you pay close attention to all deadlines listed here.
 - Reminders for important information will be listed here as well.

Click on each box to learn more!

What is Courtesy Corp?

- You will designate up to 4 students to volunteer for a time session during the conference
 - Assist Judges and Staff
 - Run Errands
 - Work Information Desk
 - Assist with Educational Symposium
 - Serve as patient for skill events (wear shorts and t-shirt)
- Characteristics
 - Great Attitude
 - Independent
 - Compliant
 - Accountable



What is a Voting Delegate?

- Voting Delegates are your chapter's voice in all official HOSA business.
- Must attend business meeting Friday morning
- Characteristics
 - Dependable
 - Understands Parliamentary Procedures

HOSA Members	Voting Delegates
1- 10 HOSA members	2
11- 20 HOSA members	3
21- 30 HOSA members	4
31 or more HOSA members	5 (no chapter shall have more than five voting delegates)





Important SLC dates: Mark your Calendar!

February 1

**State Officer
and
Scholarship
Deadline**

February 10

**Last day to
change without
\$\$ penalty**

February 17

**No changes,
substitutions,
additions.
DUE:
Verification
Forms,
Recognition
Tracking, &
Digital Uploads**



**Deadline for students to upload
Accommodation Request
is FEBRUARY 17th**

Accommodation Request Form

IEP Eligibility and Special Accommodation 2025 COMPETITION

- Interviewing Skills
- Life Support Skills
 - Personal Care
- Speaking Skills

Purpose of this Page

This page serves as the method to collect the information about any accommodation requested at regional, state, and ILC level conferences in 2024 – 2025.

There are two reasons to fill out this form:

1. You are a competitor in one of the following four (4) events: **Interviewing Skills, Personal Care, Life Support Skills, and Speaking Skills.**

These four (4) events in the HOSA Competitive Event Program are designed for students classified with an IEP. In order to participate in these four events, the competitor **MUST** be classified under the provision of the 2004 reauthorized Individuals with Disabilities Education Act (IDEA). Students classified under Section 504 are **NOT** eligible to compete in this event.

<https://hosa.org/accommodations/>



Important SLC dates: Mark your Calendar!

- **February 17th:** Digital Uploads and Recognition Tracking Deadline
- **February 24th – 28th 7am - 6pm:** Online Testing for ALL CE & NG Events
 - Includes Round 1 Tests & Extemp. Writing
- **March 5th – 7th:** SHOW TIME at Charleston Area Convention Center!





Deadline for students to upload digital submissions is **FEBRUARY 17th**

- Clinical Specialty
- **Health Career Display *NEW***
- Health Career Photography
- Health Education
- HOSA Happenings
- Job Seeking Skills
- Medical Innovation
- Mental Health Promotion
- **PUBLIC HEALTH *NEW***
- Public Service Announcement
- Researched Persuasive Writing and Speaking



To register as a volunteer to assist with competitive events

<https://www.schosa.org/volunteer-signup/>



Only DIRECT 4
Teachers will
sign up to be
Judges

Sign Ups
Will Open
in January

ADVISORS should NOT signup under the Judge signup

If you are an advisor, click on the "Advisor Sign-Up button" to assist at the conference

Don't see the Volunteer Opportunity you are looking for?

Contact Stacie Elwood competitiveevents@schosa.org

or Amanda Wilson at schosa@outlook.com.