

CONFERENCE
DRESS CODE

hosa future
health
professionals
SOUTH CAROLINA

STATE
LEADERSHIP
CONFERENCE

WEDNESDAY, "UPON ARRIVAL" AND REGISTRATION DRESS

❖ Chapter T-Shirt, HOSA
T-Shirt or School T-Shirt

❖ Khaki or Dark Colored Slacks or knee-length skirt OR HOSA Uniform
***** (NO DENIM, NO SHORTS, NO CAPRI Pants, NO LEGGINGS) *****

❖ Closed toed shoes required

❖ Tennis shoes are acceptable



WEDNESDAY OPENING SESSION



WEDNESDAY OPENING SESSION



HOSA Uniform

- Tailored navy blazer with emblem affixed over the heart
- Matching navy slacks or navy knee-length skirt
- White, closed-neck, tailored dress shirt suitable for tie or scarf
- Accents: maroon HOSA scarf or maroon or navy long tie
- Closed-toe blue or black shoes (hose optional for women)
- Belt (blue or black)
- Head covers that are required for religious purposes or to honor cultural tradition are allowed

>>OR>>

Blue or Black suit option

- Black or navy-blue suit
- White, closed-neck, tailored dress shirt (maroon or navy long tie)
- White blouse (can be member's choice)
- Accent: maroon HOSA scarf (optional)
- Members may choose to wear knee-length skirt or slacks
- Closed-toe blue or black shoes (hose optional for women)
- Belt (blue or black)
- Head covers that are required for religious purposes or to honor cultural tradition are allowed

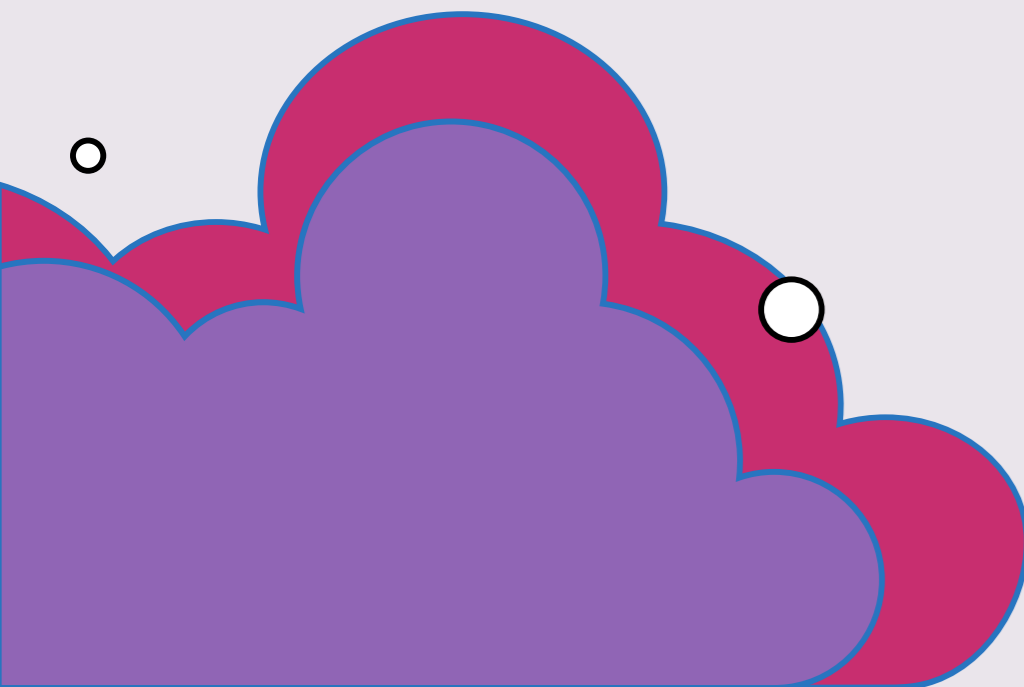


**Brown dress shoes are acceptable in 2025.
No matter the color, Absolutely NO Tennis Shoes.**



UNACCEPTABLE WEAR

- **NO HIGH HEELS**
- **NO SHORTS**
- **NO SHORT SKIRTS**
- **NO DENIM**
- **NO FLIP FLOPS**
- **NO SANDALS**



COURTESY CORP DRESS

UNLESS GIVEN OTHER DIRECTIONS FOR DRESS

COURTESY
CORP



**Brown dress shoes are acceptable in 2025.
No matter the color, absolutely NO Tennis Shoes.**

THURSDAY COMPETITIVE EVENT DRESS

<https://hosa.org/wp-content/uploads/2024/08/24-25-HOSA-Appendix-D-Dress-Code-Aug12.docx.pdf>

DRESS CODE POLICY

Professional appearance is an important aspect of the overall preparation of HOSA members for the professional world. HOSA supports a dress code for its functions that exemplifies the highest standards of professionalism while being nondiscriminatory between genders. HOSA, Inc. Board of Directors has developed the following Dress Code Policy for the International Leadership Conference.

General Session Dress (REQUIRED)

AN OFFICIAL HOSA UNIFORM OR NAVY BLUE/BLACK SUIT IS REQUIRED TO RECEIVE RECOGNITION OR AN AWARD ON STAGE

- HOSA's Official Uniform Policy
- Tailored navy blazer with emblem affixed over the heart
- Matching navy slacks or navy knee-length skirt
- White, closed-neck, tailored dress shirt suitable for tie or scarf
- Accents: maroon HOSA scarf or maroon or navy long tie
- Closed-toe blue or black (hose optional for women)
- Belt (blue or black)
- Head covers that are required for religious purposes or to honor cultural tradition are allowed.

OR

- Black or navy-blue suit
- White, closed-neck, tailored dress shirt (maroon or navy long tie)
- White blouse (can be member's choice)
- Members may choose to wear knee-length skirt or slacks
- Closed-toe blue or black shoes (hose optional for women)
- Belt (blue or black)
- Head covers that are required for religious purposes or to honor cultural tradition are allowed.

Official HOSA Functions, Workshops and Expo

Appropriate business attire is required for official functions including the HOSA Expo and workshops in conjunction with the ILC:

- HOSA Official Uniform
- Professional Attire (Suit, Jacket, Slacks, Skirt, or Dress)
- HOSA Polo or Oxford, Khakis, Chinos
- Jeans, t-shirts, and athletic clothing are not included in business casual attire



Social Activities

Social activities dress code will include everything EXCEPT: athletic clothing, swimwear, sheer or mesh clothing, tank tops, muscle shirts, crop tops and clothing with obscene or suggestive printing. Shirt straps must be two inches wide, and the length of shorts and skirts must be at minimum to the fingertip.

Shoes: Unacceptable types of dress shoes include boat shoes, canvas or fabric shoes, flip flops, casual sandals, athletic shoes, sneakers, industrial work shoes, and hiking boots.

Competitive Events Dress

Delegates must adhere to the policy as specified in the individual competitive event guidelines for the orientation and event in which they are competing.

If the competitive event guidelines identify business attire is appropriate, competitors can either wear the official HOSA uniform or any of the following dress is acceptable (color is not specified for clothing or shoes for competition):

- Suit
- Sports Jackets
- Pants
- Shirts
- Jackets
- Skirts
- Dresses
- Shoes (closed-toe; open-toe; heeled sandals are permitted)

If the competitive event guidelines identify clinical uniform or attire appropriate to the occupational area for skill events, the following dress is acceptable (can be of any color/design, with or without a HOSA emblem):

- Scrubs, EMS attire, CERT attire
- Clinical shoes or tennis shoes
- Khaki-style Pants with Polo-style Top
- Note: Shorts and flip-flops are not acceptable HOSA clinical attire.

Unacceptable clothing for competition (but not limited to):

- Denim clothing of any kind
- Canvas shoes, sneakers, flip-flops, sandals
- Casual T-shirts, tank tops, or crop tops
- Torn, frayed, or revealing clothing
- Clothing with obscene, suggestive, or offensive images and printing
- Athletic clothing, sweatpants or shirts, leggings
- Beach wear, shorts, capri pants or other short pants

Note about HOSA's Dress Code Policy:

Head covers that are required for religious purposes or to honor cultural tradition are allowed. A competitor should dress appropriately, based on the dress standards outlined for the gender to which they identify.

Dress Code for Advisors, Chaperones, Family and Guests

We encourage advisors, chaperones, family members and guests to dress professionally and appropriately for conference activities.

General Session Dress

- HOSA Official Uniform (HOSA Advisors)
- Professional Attire (Suit, Jacket, Slacks, Skirt, Dress)
- Dress Shoes

Official HOSA Functions, Workshops, and Expo:

- HOSA Official Uniform (HOSA Advisors)
- Business Casual Attire (Polo Shirt, Oxford, Khakis, Chinos, Dress, Skirt)

BUSINESS MEETING DRESS (FOR VOTING DELEGATES)



HOSA Uniform

>>OR>>

- Tailored navy blazer with emblem affixed over the heart
- Matching navy slacks or navy knee-length skirt
- White, closed-neck, tailored dress shirt suitable for tie or scarf
- Accents: maroon HOSA scarf or maroon or navy long tie
- Closed-toe blue or black shoes (hose optional for women)
- Belt (blue or black)
- Head covers that are required for religious purposes or to honor cultural tradition are allowed

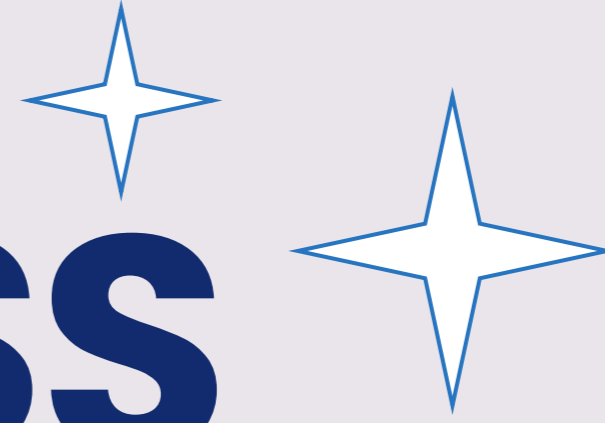


Blue or Black suit option

- Black or navy-blue suit
- White, closed-neck, tailored dress shirt (maroon or navy long tie)
- White blouse (can be member's choice)
- Accent: maroon HOSA scarf (optional)
- Members may choose to wear knee-length skirt or slacks
- Closed-toe blue or black shoes (hose optional for women)
- Belt (blue or black)
- Head covers that are required for religious purposes or to honor cultural tradition are allowed

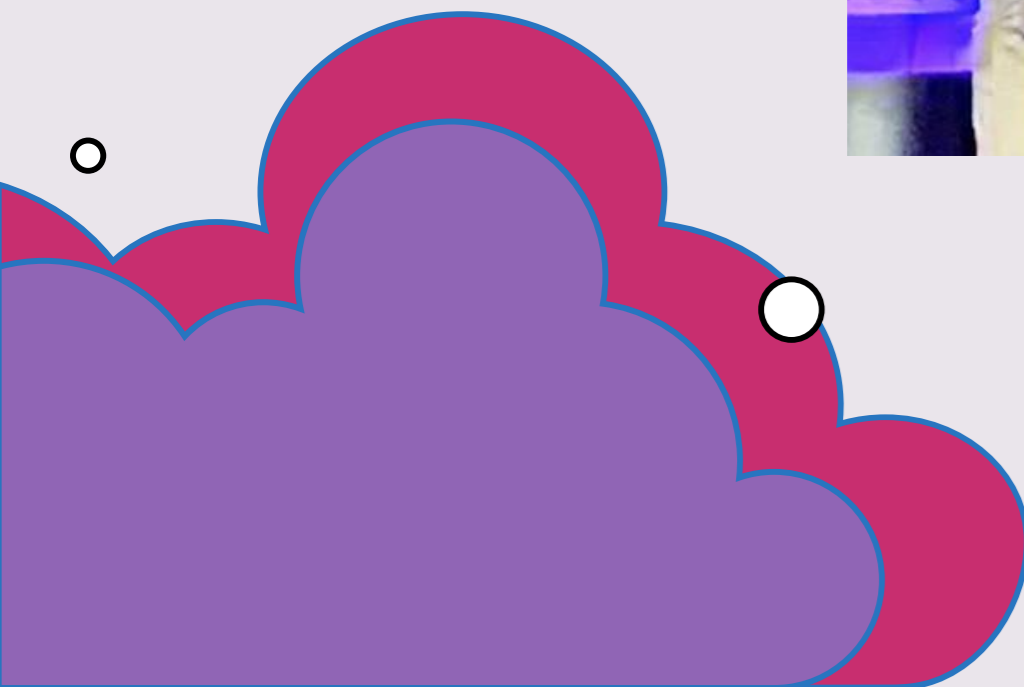
**Brown dress shoes are acceptable in 2025.
No matter the color, absolutely NO Tennis Shoes.**

FRIDAY AWARDS SESSION DRESS



- ❖ CONFERENCE T-SHIRT
- ❖ KHAKI OR DARK COLORED SLACKS OR KNEE-LENGTH SKIRT
- ❖ CLOSED-TOED SHOES ARE REQUIRED, TENNIS SHOES ARE ACCEPTABLE

- ⊘ NO Flip Flop
- ⊘ NO Sandals
- ⊘ NO Denim
- ⊘ NO Shorts
- ⊘ NO Capri Pants
- ⊘ NO Leggings



FREE TIME DRESS CODE

JEANS, T-SHIRTS & TENNIS SHOES ARE
ACCEPTABLE.

FOLLOW THE "UPON ARRIVAL" DRESS ON PAGE 2

FREE
TIME

****NO "FREE TIME" DRESS
IN THE CONVENTION CENTER****

- ⊘ NO short shorts
- ⊘ NO skirts or jeans with large holes above the knee
- ⊘ NO bike shorts
- ⊘ All leggings must be worn with a long shirt or cover to the mid-thigh
- ⊘ NO low-cut shirts, spaghetti strapped shirts, halter shirts, midriff shirts or t-shirts with inappropriate messages
- ⊘ NO pajamas outside of your assigned sleeping room (this includes no pajamas at breakfast)
- ⊘ NO uncovered swimwear outside of pool area

ADVISORS & CHAPERONES- DRESS CODE

WEDNESDAY

**Opening Session: Professional Business Attire
(Men: jacket and tie are optional)**

THURSDAY

Business Attire:

Men- Slacks and collared shirt

Women- Slacks, skirt, dress, blouse, collared shirt

*****No T-SHIRTS*****

FRIDAY

Closing Session: Same as students

Conference T-Shirt, Khaki or Dark Colored Slacks or knee-length skirt , Closed toed shoes are required, tennis shoes are acceptable

NO Flip Flop, NO Sandals, NO Denim, NO Shorts, NO Capri Pants, NO Leggings

It's important to remember that advisors and chaperones can significantly impact the behavior of students. They set the standard that students will follow, so it's important to lead by example.